

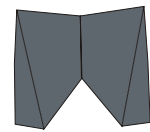
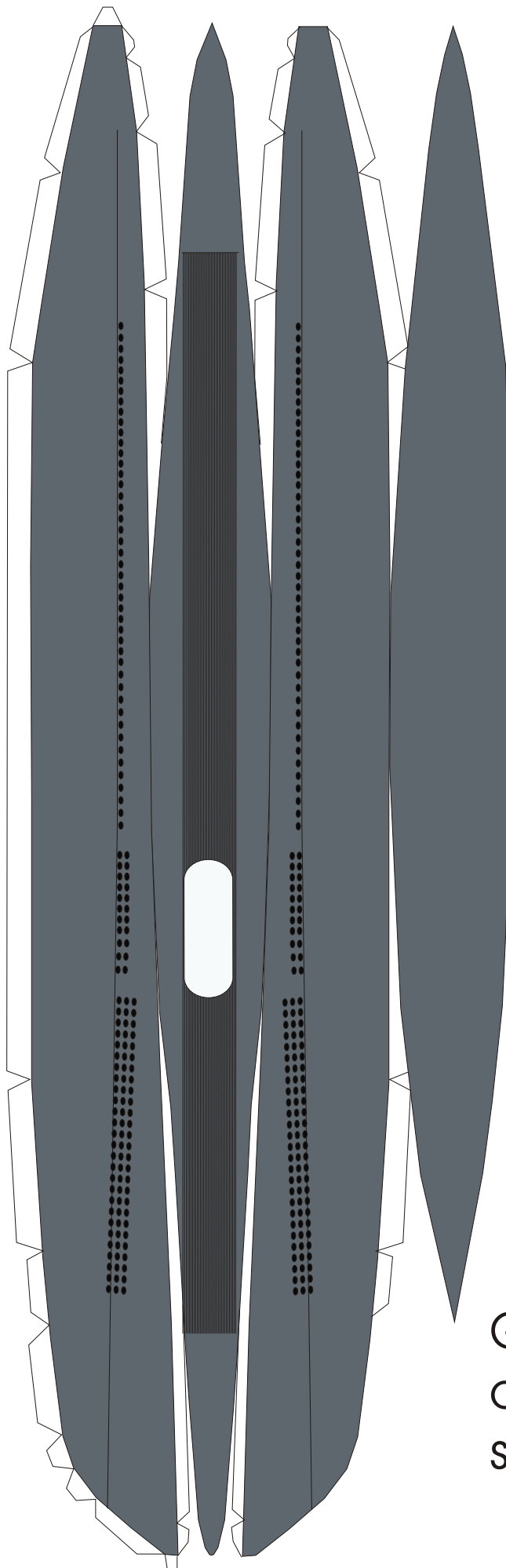
# USS Lapon

Created by  
Greg Van't Land  
[www.vantland.org](http://www.vantland.org)

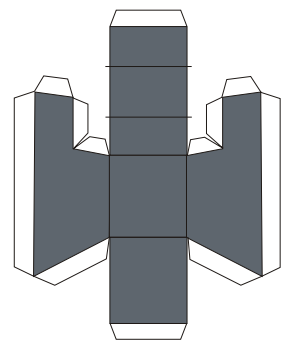
Gato Class Submarine: Laid down, 21 February 1942, at the Electric Boat Co., Groton, CT; Launched, 27 October 1942; Commissioned USS Lapon (SS-260), 23 January 1943; Decommissioned, 25 July 1946, at New London, CT

Specifications: Displacement, Surfaced: 1,526 t., Submerged: 2,424 t.; Length 311' 9"; Beam 27' 3"; Draft 15' 3"; Speed, Surfaced 20.25 kts, Submerged 8.75 kts; Complement 6 Officers 54 Enlisted; Operating Depth, 300 ft; Submerged Endurance, 48 hrs at 2 kts; Patrol Endurance 75 days; Cruising Range, 11,000 miles surfaced at 10 kts; Armament, ten 21" torpedo tubes, six forward, four aft, 24 torpedoes, one 3"/50 deck gun, two .50 cal. machine guns, two .30 cal. machine guns; Propulsion, diesel electric reduction gear with four Hoover, Owens, Rentschler Co. main generator diesel engines, 5,400HP, Fuel Capacity, 97,140 gal., four Allis Chalmers Manufacturing Co. main motors, 2,740HP, two 126-cell main storage batteries, twin screws.

<http://www.navsource.org/archives/08/08260.htm>



Glue rudder on the bottom as far back as possible



Glue Topsail over the white spot